

## Yealink W80 DECT IP Multi-Cell System

Experience DECT Roaming With Multiple Devices



The Yealink W80 DECT IP Multi-Cell System consists of the DECT Manager W80DM and base station W80B. This System brings scalability and increased mobility to business users, provides a seamless handover and roaming solution, stable communication experience, and simple deployment service covering multiple scenarios, including warehouses, hotels, authorized car dealerships, offices, retail formats, and other large spaces. Yealink is dedicated to enabling our users and partners to benefit from our professional business communication solutions.

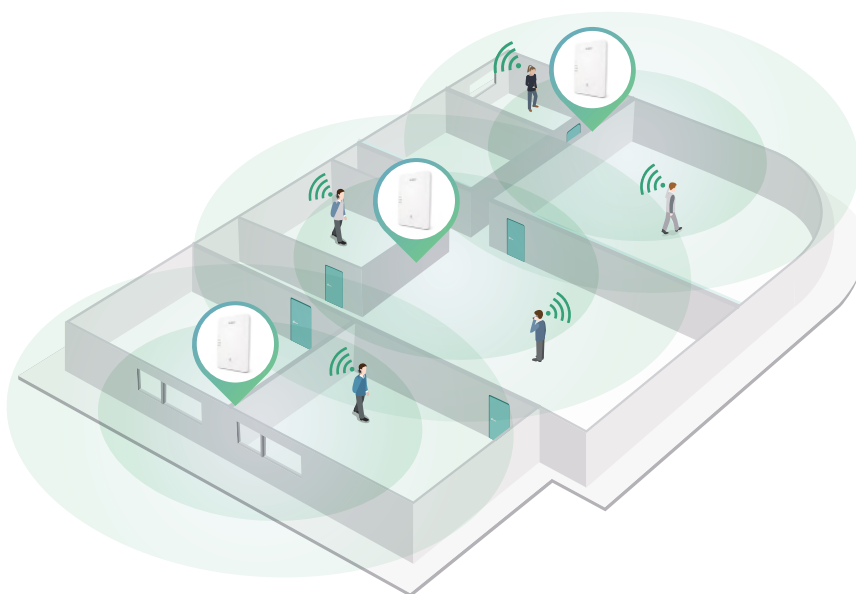
## Easy Setup, Fast Deployment

The Yealink W80 DECT IP Multi-Cell System provides easy setup for users and resellers even in a non-multicast network environment. By using the Yealink DECT IP Multi-Cell Deployment Toolkit, the correct location of each W80B base station can be quickly confirmed. Users can set up the system easily and plan large-scale deployments in just a few steps: measurement, installation, and configuration.



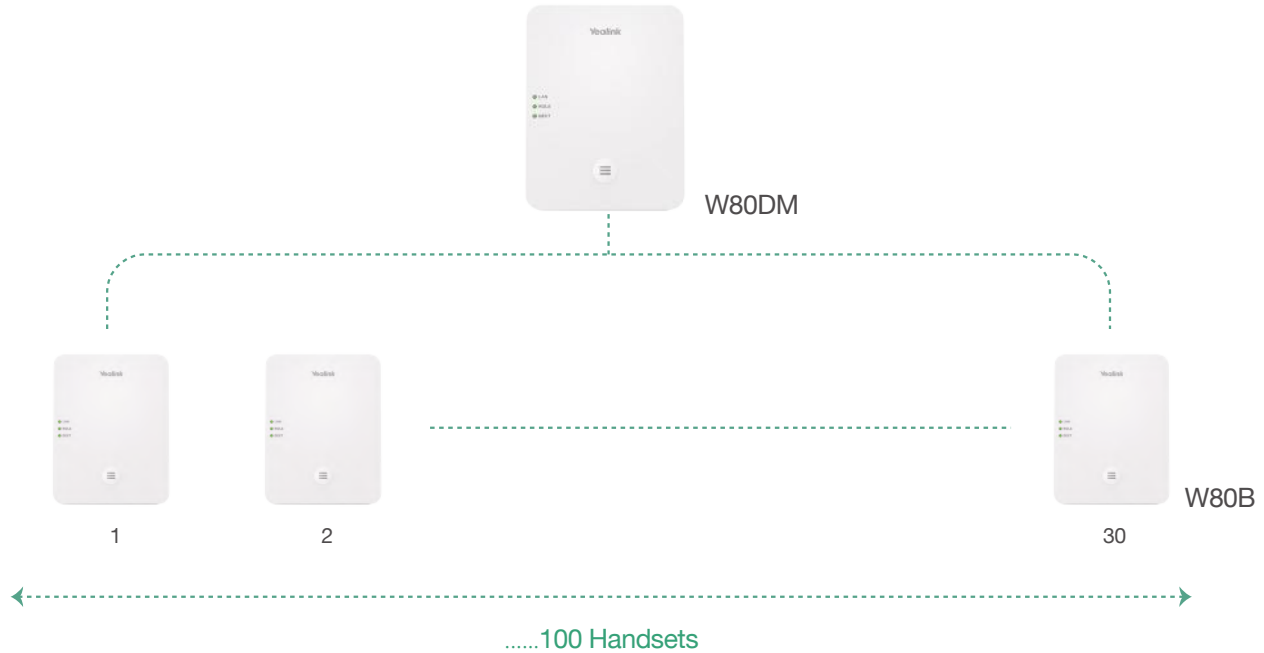
## Seamless Roaming & Stability

The Yealink W80 DECT IP Multi-Cell System provides a seamless roaming and handover solution that allows users to move freely in large spaces. In addition to supporting up to 30 base stations and 100 handsets, the wireless feature of this System enables users to enjoy flexibility, seamless roaming and handover, HD audio quality, and clear communication.



# Up to 100 Multiple Devices With 100 Parallel Calls

The Yealink W80 DECT IP Multi-Cell System supports the networking of one W80DM, the DECT Manager, and up to 30 W80B base stations. This system supports the registration of up to 100 multiple terminal devices, including the W53H, W56H, CP930W, and DD Phone (T41S+DD10K). With support for up to 100 parallel calls, this system also improves communication quality by avoiding busy signals.



**W53H**

- 1.8" 128x160 TFT color display
- 200h Standby Time
- 18h Talk Time
- Lithium Battery
- HD Audio Quality
- 3.5mm Headset



**W56H**

- 2.4" 240x320 TFT color display
- 400h Standby Time
- 30h Talk Time
- Lithium Battery
- HD Audio Quality
- 3.5 mm Headset



**CP930W**

- 3.1" 248x120-pixel Graphical LCD with Backlight
- 360h Standby Time
- 24h Talk Time
- HD Audio Quality
- Built-In 3-Microphone Array




**DD Phone (T41S+DD10K)**

- 2.7" 192 x 64 Graphical LCD
- RJ9/EHS Headset
- HD Audio Quality

## Easy Access to Multiple Phone Books

The Yealink W80 DECT IP Multi-Cell System offers easy access to multiple phone books, including Local Directory, Remote Phonebook, LDAP, and XML Phonebook. Additionally, it is broadly compatible with PBX contacts.

## Key Specifications of the W80 DECT IP Multi-Cell System

Module	Specification	W80 DECT IP Multi-Cell System
System	Pic	
	Max. number of bases for system	30
	Max. number of handsets for system	100
	Simultaneous calls for system	100
	Simultaneous calls per base	8
	Indoor/outdoor range	50m/300m
	Handover	Within group
	Roaming	Whole system
	Air Synchronization	✓
	Handset module for W80B	W53H / W56H / CP930W / DD Phone (T41S+DD10K)
	OTA for handset	✓
Audio	Wideband codecs	Opus, AMR-WB (optional), G.722
	Narrowband codecs	PCMU, PCMA, G.726, G.729, iLBC
	HD voice	✓
Interface	Ethernet interface	10/100M
	PoE	✓
	Wall mountable	✓
Features	LDAP	✓
	XML Phonebook	✓
	BroadSoft directory (User & company)	✓
	BroadSoft call log	✓
	User access level	✓
	IQUI registration	✓
	XML browser	✓
	Shared Call Appearance (SCA)	✓
	DECT encryption	✓
	Transport Layer Security (TLS)	TLS 1.0/1.1/1.2
	SRTP Support (Media)	✓
Compatibility	BroadSoft	✓
	3CX	✓
	Metaswitch	✓

